

SPOTTISWOOD	Robert
--------------------	--------

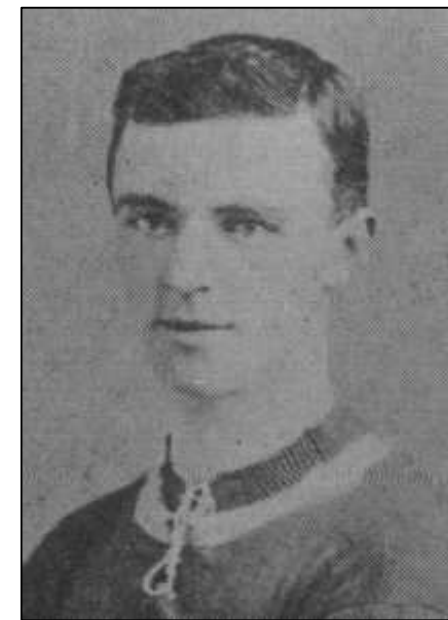
<i>Date of Birth</i>	20.1.1884	<i>Place of Birth</i>	Carlisle		
<i>Date of Death</i>	Q1 1966	<i>Place of Death</i>	Bromley		
<i>Height</i>	5ft 9in	<i>Weight</i>	11st 8lb	<i>Position</i>	Half Back

<i>Club</i>	<i>Joined</i>	<i>Season</i>	F L		F A		S L		S E		W L		U L		TOTALS	
			A	G	A	G	A	G	A	G	A	G	A	G		
Cath. Young Mens Soc.																
Carlisle United	1905															
Croydon Common	14.5.1908	1908-09			10	1	11	0	22	1	9	0	6	0	58	2
Crystal Palace	1909	1909-10			?	?	40	1							40	1
		1910-11			?	?	10	1							10	1
		1911-12			?	?	28	0							28	0
		1912-13			?	?	31	0							31	0
		1913-14			?	?	32	0							32	0
		1914-15			?	?	36	0							36	0
Clapton Orient	10.1919	1919-20	1	0											1	0
Caerphilly Town																
Treherbert	7.1920															
Sittingbourne																
Elskar Main	cs1922															
TOTALS			1	0	10	1	188	2	22	1	9	0	6	0	236	4

<i>Internationals</i>	None	<i>F.A. Cup Finals</i>	None
-----------------------	------	------------------------	------

<i>Cigarette/Trade Cards</i>				
<i>Company</i>	<i>Year</i>	<i>Number</i>	<i>Series</i>	<i>Club</i>
Taddy	1913	N/A	Prominent Footballers	Crystal Palace
Smith F. & J.	1917	29	Football Club Records	Crystal Palace

<i>Jottings</i>
The press often also spelt his name Spottiswoode
Appeared for Croydon Common in 1 minor cup match, without scoring
Was suspended "sine die" whilst at Crystal Palace, possibly for betting
Played for the Southern League in a 2-1 defeat to the Football League on 30 September 1912 at Old Trafford
When Bourne (Crystal Palace chairman) wrote in the Daily Mail of Spottiswood's "ruination by betting", he sued the writer, the club and the newspaper and, with the help of the Players' Union, won an out of court settlement of £50
Was coach at Inter-Milan in between 1922 and 1926
His brother, JOSEPH DOMINIC (born 16.3.1893 in Carlisle, died 7.5.1960 in Paddington) played for Manchester City, Bury, Chelsea, Swansea and Queens Park Rangers



SPOTTISWOOD

Robert



Smith F. & J. 1917



Taddy 1913