

<b>RYAN</b>	Charles William
-------------	-----------------

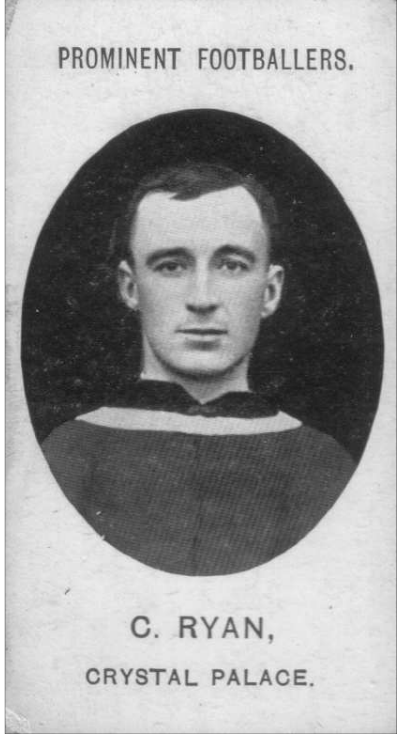
<i>Date of Birth</i>	Q3 1883	<i>Place of Birth</i>	Camberwell		
<i>Date of Death</i>	24.1.1962	<i>Place of Death</i>	Harlesden		
<i>Height</i>	5ft 5in	<i>Weight</i>	11st	<i>Position</i>	Half Back

<i>Club</i>	<i>Joined</i>	<i>Season</i>	S L		F A		TOTALS	
			A	G	A	G	A	G
Wingfield House	1897							
Hitchin								
Ilford								
Nunhead	1903							
Crystal Palace	1906	1906-07	26	0	6	0	32	0
		1907-08	28	1	2	0	30	1
		1908-09	28	1	4	0	32	1
<b>Croydon Common</b>	cs1909	1909-10	34	2	3	1	37	3
Peterborough City	10.1910							
Peterborough GN Loco	cs1911							
		<b>TOTALS</b>	116	4	15	1	131	5

<i>Internationals</i>	None	<i>F.A. Cup Finals</i>	None
-----------------------	------	------------------------	------

<i>Cigarette/Trade Cards</i>				
<i>Company</i>	<i>Year</i>	<i>Number</i>	<i>Series</i>	<i>Club</i>
Taddy	1908	N/A	Prominent Footballers	Crystal Palace

<i>Jottings</i>
His first club, Wingfield House, morphed into Nunhead, meaning that he was at the club for nine years
Won numerous medals with Wingfield House and Nunhead in local cup competitions
Appeared for Croydon Common in 2 minor cup matches, without scoring
Won a United League championship medal with Crystal Palace
Represented London and Surrey as an amateur and played cricket at a senior level
Played for the Southern League against England in 1913
The 1911 Census records him as a carpenter living at 32 Crawthorne Road, Peterborough with his wife Lydia and children Rose (9), Marie (3) and James (2) - three other children had died
His hobbies were apparently dog and poultry fancying



Taddy 1908