

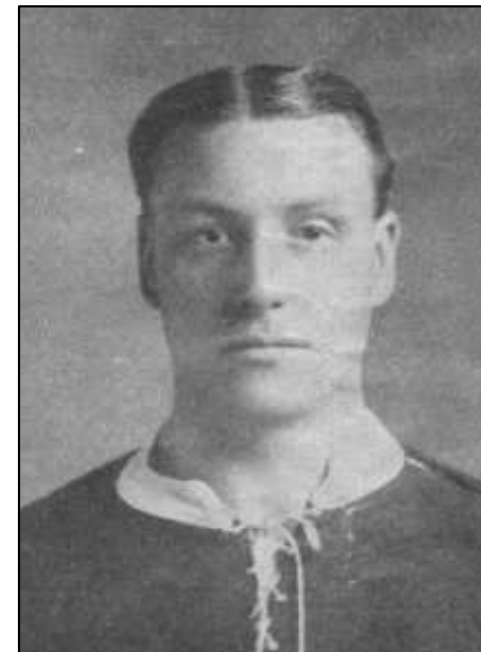
DOWNING	Samuel
----------------	--------

<i>Date of Birth</i>	19.1.1883	<i>Place of Birth</i>	Willesden Green, London		
<i>Date of Death</i>	3.1974	<i>Place of Death</i>	Cuckfield		
<i>Height</i>	5ft 10½in	<i>Weight</i>	13st 0lb	<i>Position</i>	Wing Half

<i>Club</i>	<i>Joined</i>	<i>Season</i>	<i>F L</i>		<i>F A</i>		<i>S L</i>		<i>TOTALS</i>	
			<i>A</i>	<i>G</i>	<i>A</i>	<i>G</i>	<i>A</i>	<i>G</i>	<i>A</i>	<i>G</i>
Willesden Green	1898									
Willesden Town	1899									
Park Royal	1899									
West Hampstead	1899									
Queens Park Rangers	1903	1903-04					20	0	20	0
		1904-05					15	0	15	0
		1905-06			1	0	28	2	29	2
		1906-07			2	0	37	1	39	1
		1907-08			2	0	30	4	32	4
		1908-09			2	0	31	6	33	6
Chelsea	4.1909	1908-09	6	0					6	0
		1909-10	37	5	2	0			39	5
		1910-11	34	2	6	1			40	3
		1911-12	28	1	2	0			30	1
		1912-13	25	1					25	1
		1913-14	4	0	1	0			5	0
Croydon Common	cs1914	1914-15			1	0	23	1	24	1
		TOTALS	134	9	19	1	184	14	337	24

<i>Internationals</i>	None	<i>F.A. Cup Finals</i>	None
-----------------------	------	------------------------	------

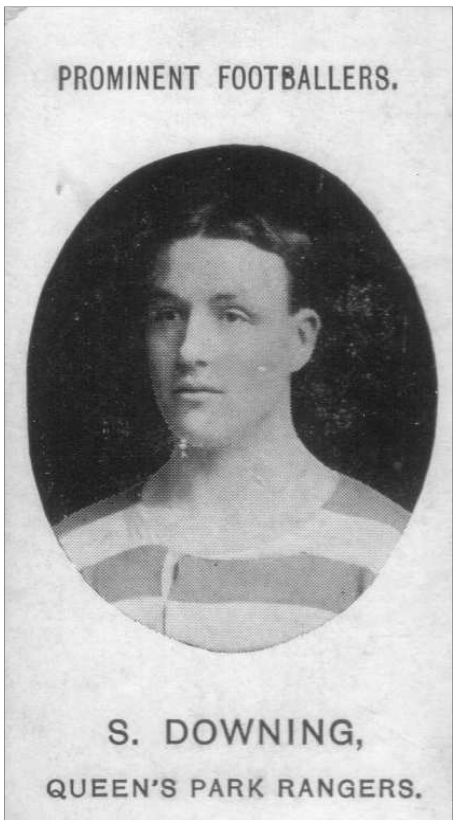
<i>Cigarette/Trade Cards</i>				
<i>Company</i>	<i>Year</i>	<i>Number</i>	<i>Series</i>	<i>Club</i>
Taddy	1907	N/A	Prominent Footballers	Queens Park Rangers
Taddy	1908	N/A	Prominent Footballers	Queens Park Rangers
Packer's Chocolate	1909	10	Footballers (Unnumbered black & white)	Chelsea
Packer's Chocolate	1909	10	Footballers (Unnumbered colour)	Chelsea
Packer's Chocolate	1909	10	Footballers (Numbered black & white)	Chelsea
Packer's Chocolate	1909	10	Footballers (Numbered colour)	Chelsea



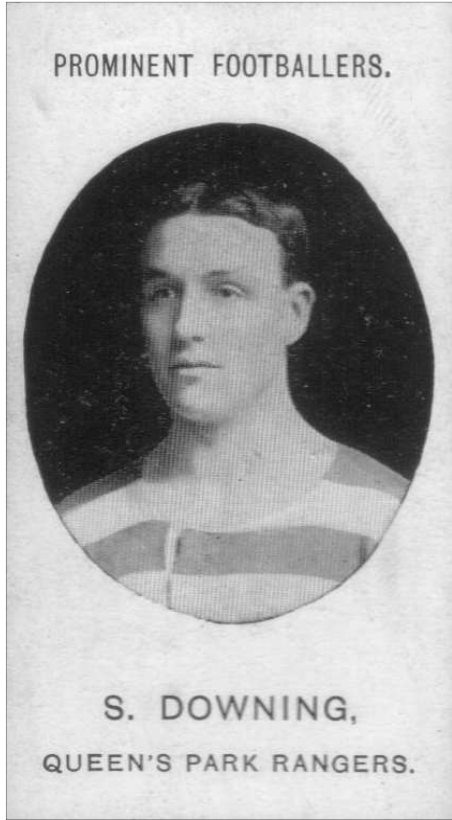
DOWNING	Samuel
----------------	--------

<i>Jottings</i>

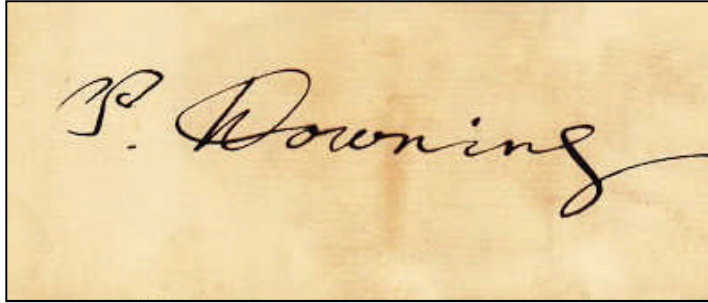
Won a Southern League Championship medal with Queens Park Rangers in 1907-08
Was registered with the Football League by Queens Park Rangers as F.W. Downing
Played in both games in the first ever Charity Shield when, as Southern League champions, Queens Park Rangers drew 1-1 with Manchester United (the Football League champions) at Stamford Bridge on 8.4.1908 - with Manchester United winning the replay, also at Stamford Bridge, 4-0 on 8.8.1908
Was in the Chelsea side which gained promotion in 1911-12 by being runners-up in Division 2 of the Football League
Appeared for Croydon Common in 2 minor cup matches, without scoring
<i>An artistic, constructive wing half, not pacy but possessing a strong shot; scrupulously fair</i>
Represented Middlesex
One of his hobbies was poultry farming - not the only Commoner with that interest
Later became a cricket coach at a college in Maidenhead



Taddy 1907



Taddy 1908



Chelsea 1911-12

DOWNING

Samuel

TADDY & CO.. LONDON.

PROMINENT FOOTBALLERS.

S. DOWNING,
QUEEN'S PARK RANGERS.

TADDY & CO.. LONDON.

**"GRAPNEL"
MIXTURE.**

A delightfully cool pipe tobacco, combining the sweetness and fragrance of the better class Virginia Tobaccos with the rich flavour of Latakia.

Rather a full-flavoured, but an eminently pleasant mixture.

In 1 oz. and 2 oz. Packets,
and 2 oz. and 4 oz. Tins.

TADDY & CO.,
LONDON.

TADDY & CO., LONDON.

CERTIFICATE
No 1 of 5
Originals Series 4

This accompanying card is an original Taddy & Co.' football card from the period 1907-1914 presented in a 23ct gold plated Futera frame set with precious stones.

This card features:

SAMUEL DOWNING
ENGLAND

BORN 19.1.1883
BIRTHPLACE Willesden, England
POSITION Defender
CLUB
Chelsea, Queens Park Rangers

BIO
Although playing as a Defender, Downing endeared himself to QPR fans when he scored a hat trick on his debut for the London Club against Swindon Town in 1903.

© Futera FZ LLC 2014
All Rights Reserved.

1/5

MYTHICALS

FUTERA

© Futera FZ LLC 2014,
All Rights Reserved.

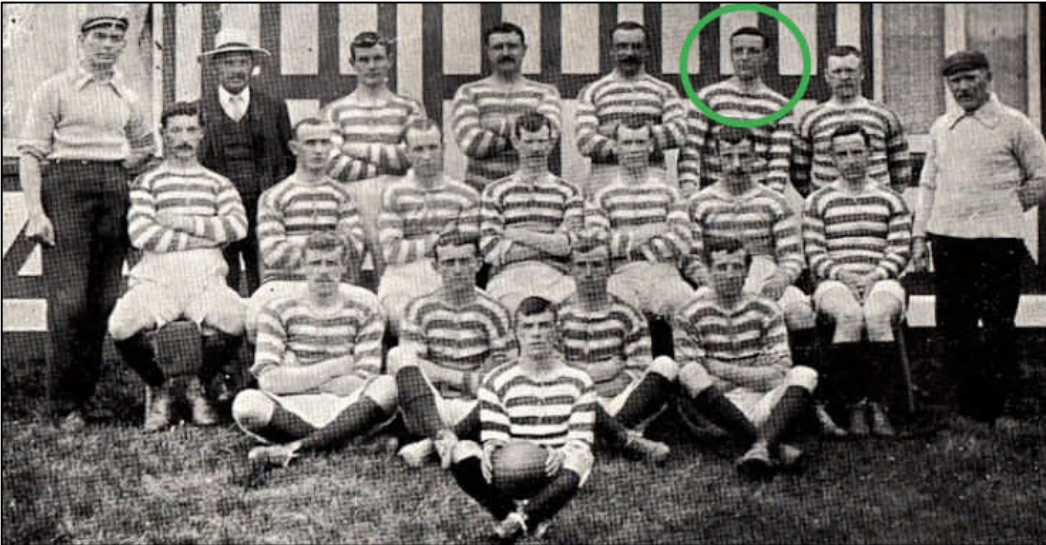
The Futera 2014 reissue of the Taddy Prominent Footballer card

DOWNING

Samuel



Chelsea 1913-14



Queens Park Rangers 1905-06



Queens Park Rangers 1905-06